



THE NEW ERA IN
**WATER
TRUCKS**

PRODUCT BROCHURE

EDITION 1.0



www.ttiwatertrucks.com.au

DISCLAIMER

There may be information in our catalogue that contains typographical errors, inaccuracies, or omissions that may relate to product descriptions, specifications, pricing and other details. All weights, measurements and colours shown, are best approximations. Trans Tank International (TTi) cannot guarantee and assumes no legal liability or responsibility for the accuracy or completeness of the information provided. The information contained in this catalogue is for general guidance only. TTi reserves the right to change, delete, or otherwise modify the information which is represented without any prior notice.



CONTENTS

INTRODUCTION

08

WATER TRUCK MODULES

22

POLY TANK ADVANTAGE

10

SLIP ON WATER CARTS

26

LIQUID LOCKERS

11

RECENT BUILDS

34

WATER TRUCKS

12

THE TTI DIFFERENCE

38

THE TTI DIFFERENCE



20-Year Tank Warranty

TTI's poly tanks are backed by an industry best full 20-Year Tank Warranty



Backup Service & Parts

Friendly, helpful support when you need it, both pre and post purchase



100% Australian Made

Australian-owned and made for over 22 years



Built to Last (Not to Rust)

Unlike steel tanks, TTI's poly tanks handle chassis twisting and movement with ease

THE NEW ERA IN WATER TRUCKS

We design, develop and manufacture poly tank water truck solutions here in Australia.



WATER TRUCKS
1800 816 277


WATER TRUCKS
1800 816 277



THE TTI JOURNEY

1999

TTi founded by André Büchner in Nathalia, Victoria manufacturing rotomolded poly tanks

2006

TTi opens dedicated fabrication & assembling facility for water carts in Shepparton



2018

TTi partners with Water Tanks parts Specialist in Melbourne

2020

TTi opens dedicated water trucks manufacturing facility in Melbourne

2022

TTi launch next-gen range of poly water trucks



Ask yourself if it
CRISP?
Clean • Efficient • Durable • Reliable • Proven

AUTHORIZED RESELLERS & FITTERS

Water Trucks

BENEFITS



LOCAL SERVICE & SUPPORT

Peace of mind for ongoing maintenance and repairs



COST EFFECTIVE

Minimize transportation costs of trucks and modules



TTI has partnered with a national network of Authorized Resellers & Fitters.

So wherever you are & whenever truck package & combination you'd like, we can cater to your needs.

INTRODUCTION

TTI IS THE WORLD'S MOST RELIABLE LIQUID TRANSPORT TANK SOLUTIONS

TTi, or Trans Tank International is respected as Australia's Leading Manufacturer of rotationally moulded poly tanks, and has been for over 20 years.

TTI VALUES

20

YEAR TANK WARRANTY

2800+

TANKS BUILT

22+

YEARS MANUFACTURING



INTRODUCTION

THE TTI DIFFERENCE



ENVIRONMENTALLY AWARE

- We generate enough solar power to run our entire factory
- We commit to recycle wherever possible & continually economise our processes



COMMITTED TO THE HEALTH & SAFETY OF OUR PEOPLE

- We are passionate about OH&S and constantly strive for excellence
- We provide training & development for the personal enrichment of our staff

TTI VALUES



CARE



RESPECT



INNOVATION



SINCERITY



PASSION



MOULDING



FABRICATION



ADMINISTRATION



LOGISTICS



ASSEMBLY



WAREHOUSE



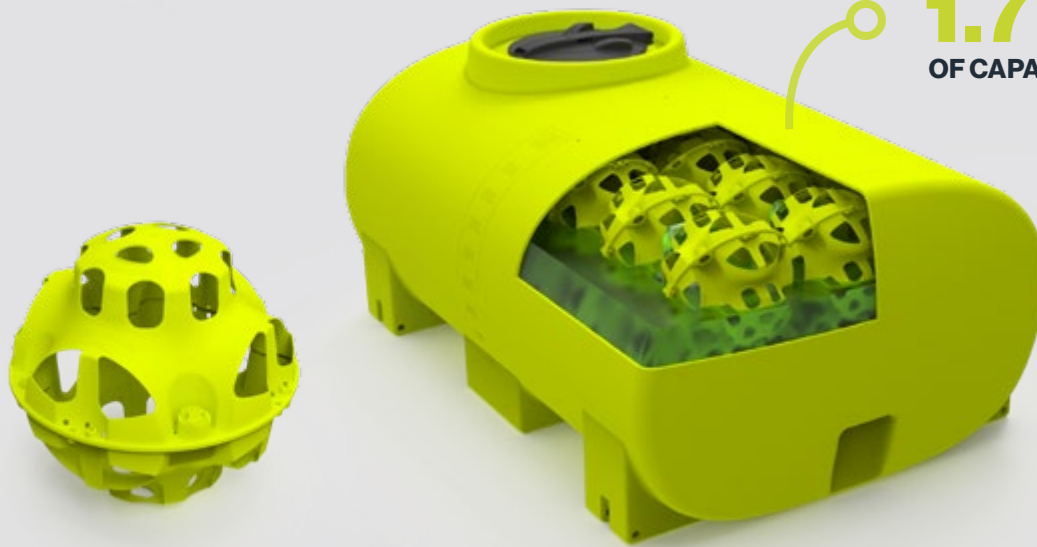
TTI POLY TANK ADVANTAGE

The real deal on steel

POLY TANK ADVANTAGE

LIQUIDLOCKER™

The Locker that Stops The Slosh!



ONLY
1.7%
OF CAPACITY

LIQUIDLOCKER TESTING & DEMONSTRATION RESULTS:

100%

ELIMINATION OF
LIQUID SURGE

80%

IMPROVED CORNERING
& MANEUVERABILITY

40%

SHORTER BRAKING
DISTANCE

50%

REDUCTION IN VEHICLE
WEAR AND TEAR

WHY CHOOSE POLY?



FULLY-FEATURED
FIT OUTS



LARGER
PAYLOADS



BUILT TO LAST
(NOT TO RUST)



MORE COST
EFFECTIVE



WATER TRUCKS

Factory-fitted water trucks

4

AVAILABLE SIZES

4

UPGRADE OPTIONS

20

TANK YEAR WARRANTY

WATER TRUCKS

COMBINING RELIABILITY WITH STRENGTH AND TECHNOLOGY

At TTI, we have been manufacturing and supplying reliable water truck solutions for Civil Contractors, Landscapers, Councils and Hire Companies across the country for over 20 years. TTI's water trucks simply work when you need them to.

Designed for the rugged Australian landscape, TTI's Water Trucks and Water Cart solutions are the preferred choice of civil contractors, councils, landscapers and industrial contractors.



WATER TRUCKS

CASCADE™ 8000L

The Ultimate Compact 4x2 Water Truck

Popular with landscapers due to saving watering time by being more accurate, and easy to operate. Perfect for smaller civil projects, where a large water trucks are not required.



Scan to see
this product
in action!



STORM™ 13,000L

6x4 Civil Spec Flagship Water Truck

Designed to withstand the harshest of conditions, the 13,000 litre Storm™ water truck will deliver greater efficiencies when applying water on site. Perfect for civil & earthmoving contractors, councils, hire companies and more.



Scan to see
this product
in action!



WATER TRUCKS

STORM™ 15,000L

The Ultimate Compact 4x2 Water Truck

Designed to withstand the harshest of conditions, the 15,000 litre Storm™ water truck will deliver greater efficiencies when applying water on site. Perfect for civil & earthmoving contractors, councils, hire companies and more.



Scan to see
this product
in action!



STANDARD FEATURES



HEAVY-DUTY POLY TANK

Tough, rotomolded poly tank with a 20-Year Warranty, reflective decals & rear/side site tubes



3" REAR SPRAY HEADS

One central 3" magnum spray head and two 1.5" left and right magnum spray heads



20M SPRING REWIND HOSE REEL

Heavy duty 20m Spring Rewind hose reel with twist type nozzle



FUNNEL LID AND HYDRANT FILL SYSTEM

Anti-splash funnel with debris strainer for top filling & 3" hydrant fill point, 6" air-gap



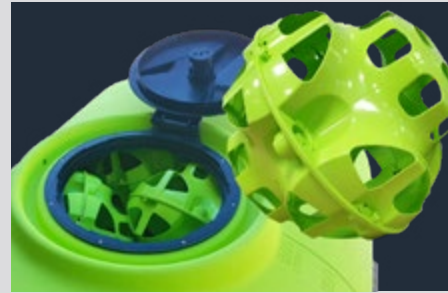
SUCTION / DISCHARGE MANIFOLD & FILL KIT

3" camlock suction and discharge ports, 2 x 5m suction hoses with on-board storage



EASY-TO-USE IN-CAB CONTROLLER

Ergonomic In-cab control panel mounted in the cabin



LIQUIDLOCKER™ BAFFLING SYSTEM

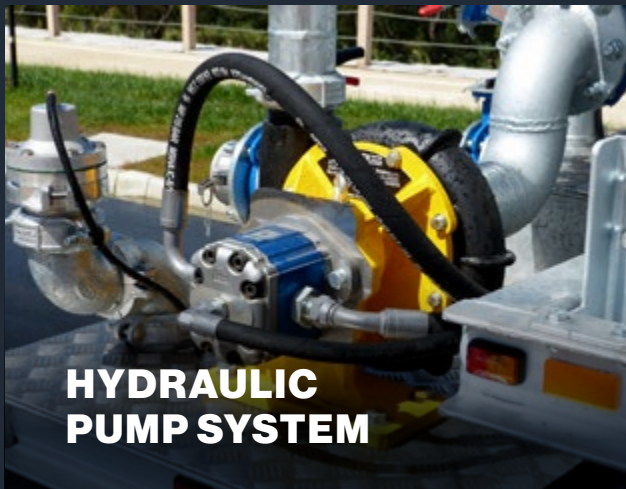
Eliminate liquid surge for safe water transport



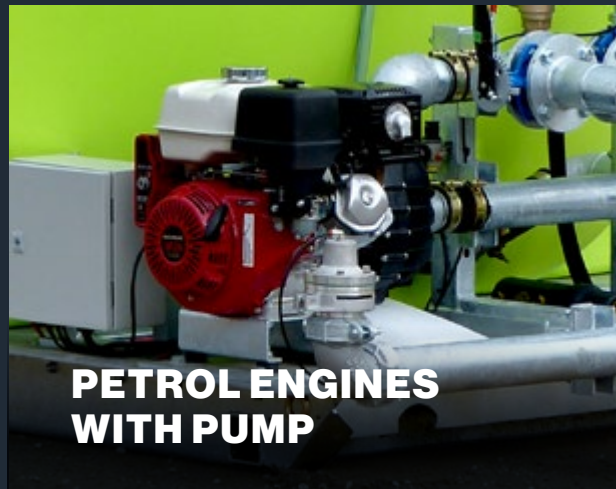
ENGINEER APPROVED CHASSIS FRAME

Galvanised, engineer-approved subframe, fitted to truck chassis. VASS Certificate supplied.

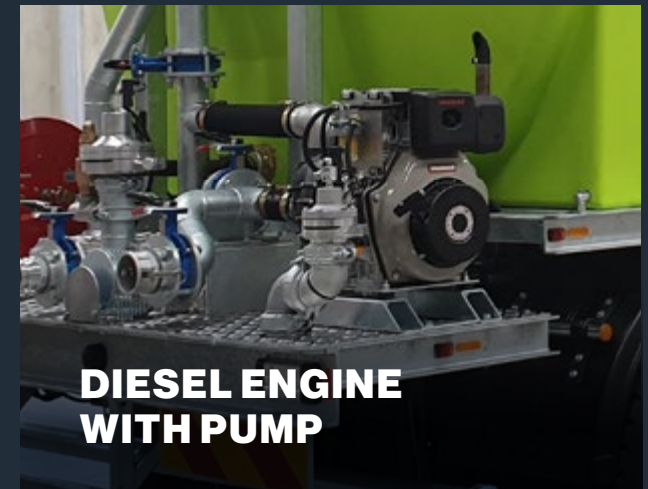
PUMP & ENGINE OPTIONS



- Hydraulic pump with B3XRA pump (1600L/min)
- Dial up hydraulic pump system
- Premium dial up hydraulic pump system



- Poly pump honda 13hp (1700L/m) - 3" x 3"
- Long range fuel tank (11 litres for Honda engines)



- Yanmar 10hp elec start diesel B3XRA pump (1600L/min)
- In-line fuel system (for diesel engines)
- In-cab throttle control (for diesel engines)
- Air filter kit fitted (10hp yanmar diesel motor)

ADDITIONAL OPTIONS



3" ELECTRIC WATER CANNON

Electric nozzle for spray pattern control. In-cab joystick



BATTERY SPRAY HEADS

2x spray heads mounted on each side of the truck between the tank and the cab



DUAL FRONT ROAD SPRAYS

2 x Front Spray Frog Nozzles mounted on front of truck - individual on/off



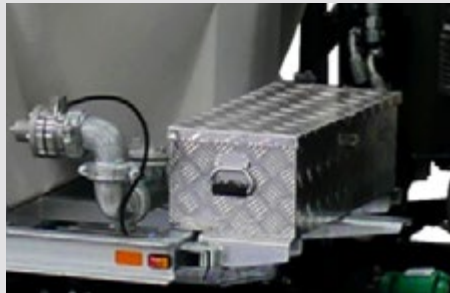
PRESSURE AND GRAVITY DRIBBLE BAR

Pressurised and/or Gravity Dribble Bar



WATER TRUCKS
1800 816 277

OTHER OPTIONS



LOCKABLE TOOLBOX



ROOF RACK WITH ROTATING BEACONS



STABILIZER HITCH



HYDRANT STANDPIPE



WORK LIGHTS



REAR LED ARROW BOARD



HYDRANT HOLDER BRACKET



BUCKET HOLDER (COMPLETE KIT)



TTI
WATER TRUCKS
1800 816 277

TTI
WATER TRUCKS
1800 816 277



WATER TRUCK MODULES

Fully built fit-outs ready to be shipped
Australia wide

4

AVAILABLE SIZES

4

UPGRADE OPTIONS

20

TANK YEAR WARRANTY

TURN YOUR EXISTING TRUCK INTO A WATER TRUCK

TTi offers remote supply modules, which is the perfect solution if you have the desire to do your own 'fit-off' of a complete water cart module.

Design, fabrication and testing of steel componentry is all completed in house, before being hot-dip galvanised ready for final assembly.

The module is then fully assembled and tested one of our state-of-the-art facilities, ready for sign off and mounting to the truck of your choice.



WATER TRUCK MODULES

WATER TRUCK MODULES

TTi offers remote supply modules, which is the perfect solution if you have the desire to do your own 'fit-off' of a complete water cart module.



Scan to see
this product
in action!



STANDARD FEATURES



HEAVY-DUTY POLY TANK

Tough, rotomolded poly tank with a 20-Year Warranty, reflective decals & rear/side site tubes



3" REAR SPRAY HEADS

One central 3" magnum spray head and two 1.5" left and right magnum spray heads



20M SPRING REWIND HOSE REEL

Heavy duty 20m Spring Rewind hose reel with twist type nozzle



FUNNEL LID AND HYDRANT FILL SYSTEM

Anti-splash funnel with debris strainer for top filling & 3" hydrant fill point, 6" air-gap



SUCTION / DISCHARGE MANIFOLD & FILL KIT

3" camlock suction and discharge ports, 2 x 5m suction hoses with on-board storage



EASY-TO-USE IN-CAB CONTROLLER

Ergonomic In-cab control panel mounted in the cabin



LIQUIDLOCKER™ BAFFLING SYSTEM

Eliminate liquid surge for safe water transport



ENGINEER APPROVED CHASSIS FRAME

Galvanised, engineer-approved subframe, fitted to truck chassis. VASS Certificate supplied.



SLIP ON WATER CARTS

For tippers & tray trucks

8

AVAILABLE SIZES

3

UPGRADE OPTIONS

20

TANK YEAR WARRANTY

SLIP ON WATER CARTS

TURN YOUR EXISTING TRUCK INTO A WATER TRUCK

FloodRite™ slip on water carts are designed primarily for slipping into tipper trucks, or forklifting onto tray trucks.

Their perfect for general civil works or road construction, dust suppression or landscape watering.



SLIP ON WATER CARTS

SLIP ON WATER CARTS

FloodRite™ slip on water carts are designed primarily for slipping into tipper trucks, or forklifting onto tray trucks.

Their perfect for general civil works or road construction, dust suppression or landscape watering.



Scan to see
this product
in action!



STANDARD FEATURES



HANDHELD WIRELESS REMOTE CONTROL

Turn motor on/off, spray bar & dribble bar on/off. Easily switch trucks.



HEAVY-DUTY, FULLY BAFFLED POLY TANK

UV stabilized tank, suitable for potable water and backed by an industry best 20 year warranty.



1600L/MIN SELF PRIMING PUMP

1600L/min Self Priming Pump with Honda Petrol or Yanmar Diesel Engines.



HEAVY DUTY GALVANISED SKID FRAME

The tank is mounted on a heavy duty skid frame, which incorporates forklift pockets.



20M SPRING RETRACTABLE HOSE REEL

Heavy-duty spring rewind multi-purpose hose reel, fitted with 20m of 25mm wash down hose and adjustable nozzle.



ERGONOMIC PIPEWORK MANIFOLD

Fully welded and hot dip galvanised pipework manifold, with actuators & valves.



STANDPIPE, HYDRANT & SUCTION FILL CAPABILITIES

3" Hydrant Funnel fill lid, hydrant system with air-gap & 6m quick fill kit for suction filling.



3" REAR ADJUSTABLE SPRAY HEADS

Fully adjustable & individually operated rear spray heads.

WE OFFER A RANGE OF SIZES



6000L FloodRite™

ST06000FR1D
3600 x 2000 x 1990mm (LWH)
1,200kg



7000L FloodRite™

ST07000FR1D
2910 x 1410 x 1228mm (LWH)
800kg



8000L FloodRite™

ST08000FR1D
4400 x 2100 x 1990mm (LWH)
1,450kg



10000L FloodRite™

ST10000FR1D
4400 x 2100 x 2330mm (LWH)
1,550kg



12000L FloodRite™

ST12000FR1D
4400 x 2100 x 2690mm (LWH)
1,680kg



13000L FloodRite™

ST13000FR1D
4200 x 2250 x 2760mm (LWH)
1,680kg

SLIP ON WATER CARTS



13000L FloodRite™ (Low-Profile)

ST13000FR1AD

5400 x 2370 x 2240mm (LWH)

1,770kg



15000L FloodRite™

ST15000FR1D

5400 x 2370 x 2490mm (LWH)

1,860kg



17000L FloodRite™

ST17000FR1D

5400 x 2370 x 2840mm (LWH)

1,950kg



“
Since we bought the skid-mounted unit, we’ve been very impressed with it ... the quality of the unit is fantastic. TTi was very accommodating in specifying it - making it to our...”

Daryl | Redbar Excavations – FloodRite™ Water Cart

SLIP ON WATER CARTS

ADDITIONAL OPTIONS



SELF-LOADING LEG SYSTEM



2.4M PRESSURIZED DRIBBLE BAR KIT



3" ELECTRIC WATER CANNON





RECENT BUILDS

TTI's recent projects/builds





Bus & Truck Centre

City
BUS & TRUCK CENTRE
(03) 9303 2222

RECENT BUILDS

BILDGROUP

STORM™ WATER TRUCKS



ULS GROUP

CASCADE™ WATER TRUCK (8,000 LITRE)



VRC (Flemington)

STORM™ WATER TRUCK (13,000 LITRE)

WEDDIN SHIRE COUNCIL

STORM™ WATER TRUCK (13,000 LITRE)





OUR PEOPLE

—
THE TTI
DIFFERENCE





Nathalia - **(Head Office)**
3 Murray Valley Hwy, Nathalia,
VIC, 3638

Nathalia - **(Fabrication)**
5 Nugent St, Nathalia,
VIC, 3638

Melbourne - **(Water Trucks)**
12 Burwood Avenue, Sunshine North,
VIC, 3020



Head Office: 1800 816 277
Landline: (03) 5866 3266
Fax: (03) 5866 3019



Sales: sales@tti.com.au
Support: customercare@tti.com.au

DISCLAIMER

There may be information in our catalogue that contains typographical errors, inaccuracies, or omissions that may relate to product descriptions, specifications, pricing and other details. All weights, measurements and colours shown, are best approximations. Trans Tank International (TTI) cannot guarantee and assumes no legal liability or responsibility for the accuracy or completeness of the information provided. The information contained in this catalogue is for general guidance only. TTI reserves the right to change, delete, or otherwise modify the information which is represented without any prior notice.

www.tti.com.au

Follow us at #TransTankInternational



Quotes and Enquiries
1800 816 277