

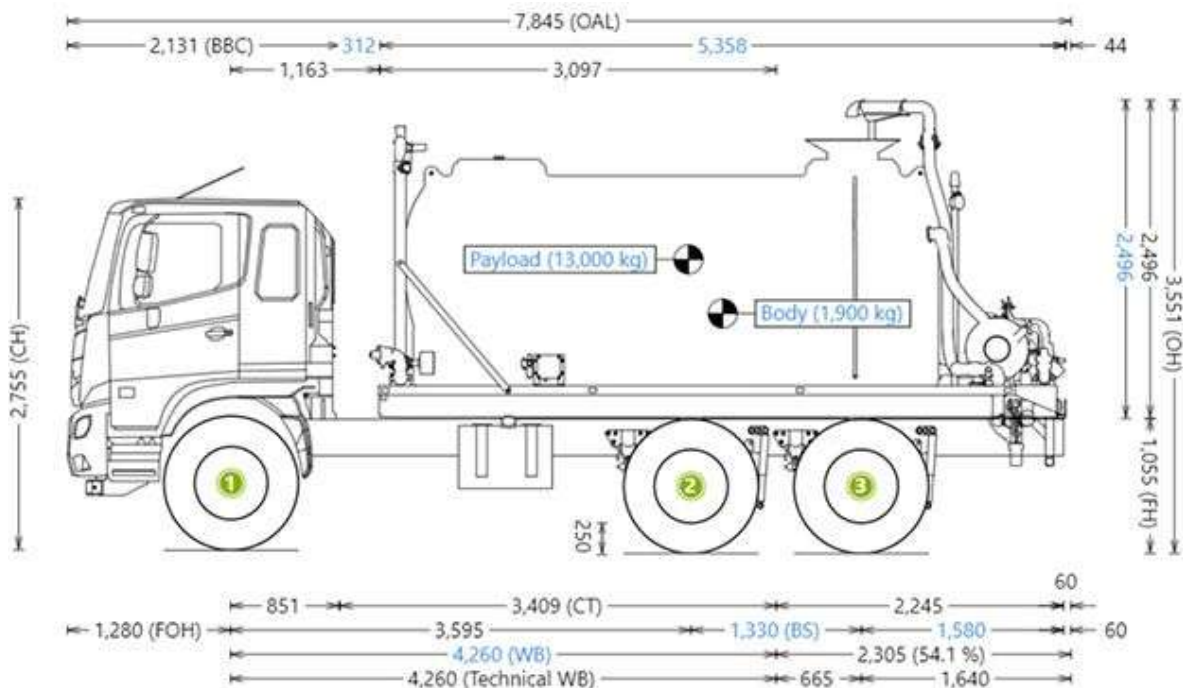


TANK SPECIFICATIONS

| | |
|--------------------------------|--|
| MAKE: | TRANS TANK® INTERNATIONAL |
| MODEL: | STORM™ 13000L |
| MATERIAL: | POLYETHYLENE |
| MAX. CAPACITY: | 13,000 LITRES |
| SAFETY & COMPLIANCE | ENGINEERING PLATE AND CERTIFICATE FOR BODY MOUNTING; ADR COMPLIANT DESIGN; OPERATOR MANUAL; RISK ASSESSMENT; ISO 9001:2015 ISO STANDARD QUALITY MANAGEMENT |

CHASSIS SPECIFICATIONS

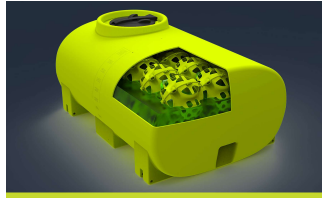
| | |
|-----------------------|--|
| MAKE: | HINO |
| MODEL: | FM 2628 - Spring Suspension |
| CONFIGURATION: | 6 X 4 |
| GVM GCM: | 26,000 kg 36,500 kg |
| TRANSMISSION: | ALLISON 3200 6 SPEED AUTOMATIC |
| ENGINE: | HINO A09C-US 6 CYLINDER TURBOCHARGED AND INTERCOOLED DIESEL |
| POWER: | 280hp / 235kW @ 1,800RPM |
| FUEL TANK: | 200 LITRES |



STANDARD FEATURES



HEAVY-DUTY POLY TANK
Tough, rotomolded poly tank with a 25-Year Warranty, reflective decals & rear/site tubes



LIQUIDLOCKER™ Baffle SYSTEM
100% Elimination of liquid surge for safe water transport



ENGINEER APPROVED CHASSIS FRAME
Galvanised, engineer-approved subframe, fitted to truck chassis. VASS Certificate supplied.



EASY-TO-USE IN-CAB CONTROLLER
Ergonomic In-cab control panel mounted in the cabin



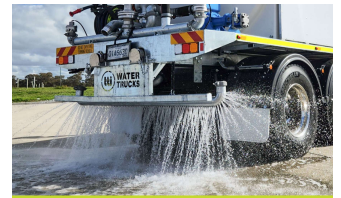
HYDRAULIC PUMP SYSTEM
Variable Speed Hydraulic system complete with Hydra Pak, PTO to Truck, Piston Pump, Hydraulic valving and controls



1600 L/MIN CAST IRON PUMP
1600L/min, Self Priming, Australian Made Cast Iron Pump with pressure relief



3" REAR SPRAY HEADS
Central 3" & two 1.5" left and right spray heads with individual on/off. Adjustable roll groove mounting



PRESSURISED AND/OR GRAVITY DRIBBLE BAR
Featuring 3" Pressurised and/or Gravity Dribble Bar's



3" WATER CANNON (ELEC)
Electric nozzle for spray pattern control; In-cab joystick; Australian Made



BATTER SPRAY HEADS
2x Batter spray heads mounted on each side of the truck between the tank and the cab



FRONT SPRAY HEADS
2 x Front spray frog nozzles mounted on front of the truck - individual on/off



WORK LIGHTS
Rear LED worklights with in cab switch

OTHER FEATURES

- | | |
|--|---|
| ① 20M SPRING REWIND HOSE REEL | ⑤ SUCTION / DISCHARGE MANIFOLD & FILL KIT |
| ② LED REAR TAILLIGHTS & CLEARANCE LIGHTS | ⑥ ROOF RACK WITH ROTATING BEACONS |
| ③ FUNNEL LID AND HYDRANT FILL SYSTEM | ⑦ GME TX4500 UHF |
| ④ REVERSE CAMERA & SQUAWKER | ⑧ BATTERY ISOLATION SWITCH |

ABN: 30 165 797 277 | FREECALL: 1800 816 277