

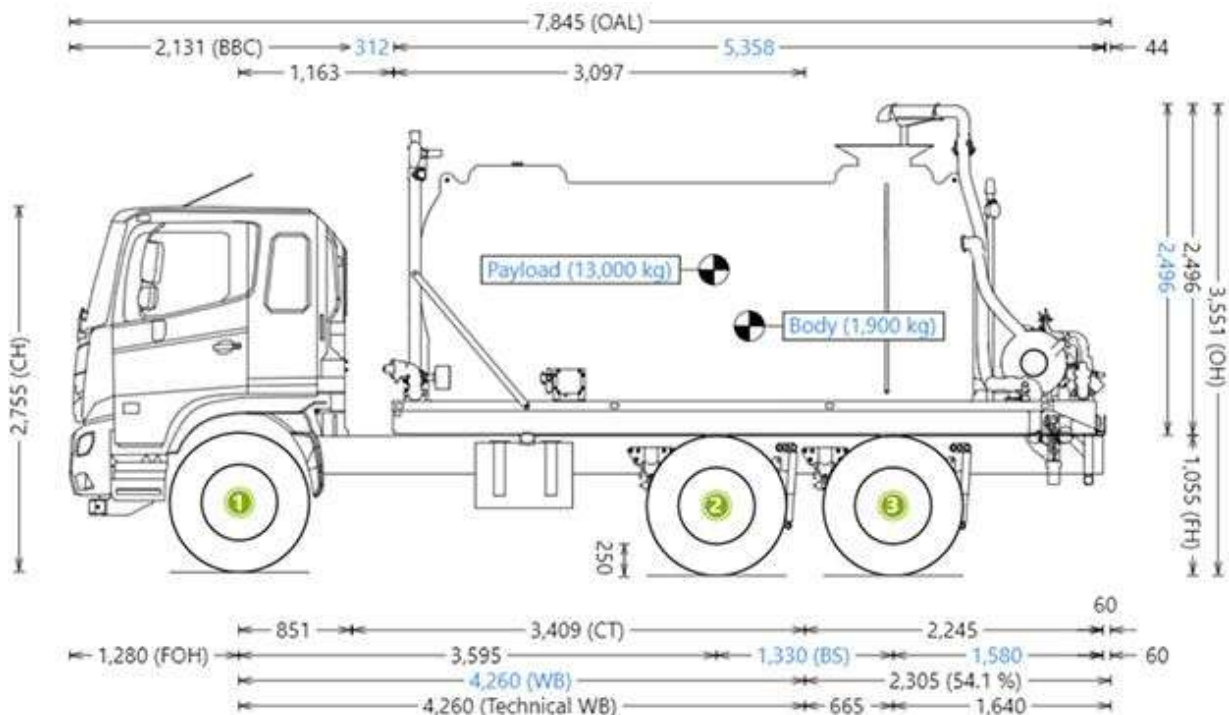


## TANK SPECIFICATIONS

<b>MAKE:</b>	TRANS TANK® INTERNATIONAL
<b>MODEL:</b>	STORM™ 13000L
<b>MATERIAL:</b>	POLYETHYLENE
<b>MAX. CAPACITY:</b>	13,000 LITRES
<b>SAFETY &amp; COMPLIANCE</b>	ENGINEERING PLATE AND CERTIFICATE FOR BODY MOUNTING; ADR COMPLIANT DESIGN; OPERATOR MANUAL; RISK ASSESSMENT; ISO 9001:2015 ISO STANDARD QUALITY MANAGEMENT

## CHASSIS SPECIFICATIONS

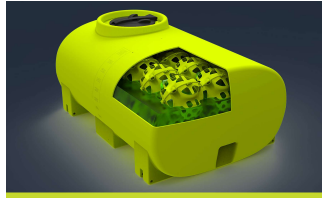
<b>MAKE:</b>	HINO
<b>MODEL:</b>	FM 2632 - Spring Suspension
<b>CONFIGURATION:</b>	6 X 4
<b>GVM   GCM:</b>	26,000 kg   36,500 kg
<b>TRANSMISSION:</b>	ALLISON 3200 6 SPEED AUTOMATIC
<b>ENGINE:</b>	HINO A09C-US 6 CYLINDER TURBOCHARGED AND INTERCOOLED DIESEL
<b>POWER:</b>	320hp / 235kW @ 1,800RPM
<b>FUEL TANK:</b>	200 LITRES



## STANDARD FEATURES



**HEAVY-DUTY POLY TANK**  
Tough, rotomolded poly tank with a 25-Year Warranty, reflective decals & rear/site tubes



**LIQUIDLOCKER™ Baffle SYSTEM**  
100% Elimination of liquid surge for safe water transport



**ENGINEER APPROVED CHASSIS FRAME**  
Galvanised, engineer-approved subframe, fitted to truck chassis. VASS Certificate supplied.



**EASY-TO-USE IN-CAB CONTROLLER**  
Ergonomic In-cab control panel mounted in the cabin



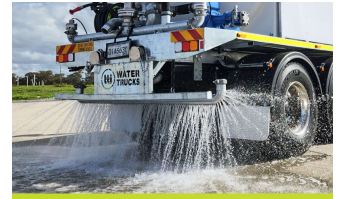
**HYDRAULIC PUMP SYSTEM**  
Variable Speed Hydraulic system complete with Hydra Pak, PTO to Truck, Piston Pump, Hydraulic valving and controls



**1600 L/MIN CAST IRON PUMP**  
1600L/min, Self Priming, Australian Made Cast Iron Pump with pressure relief



**3" REAR SPRAY HEADS**  
Central 3" & two 1.5" left and right spray heads with individual on/off. Adjustable roll groove mounting



**PRESSURISED AND/OR GRAVITY DRIBBLE BAR**  
Featuring 3" Pressurised and/or Gravity Dribble Bar's



**3" WATER CANNON (ELEC)**  
Electric nozzle for spray pattern control; In-cab joystick; Australian Made



**BATTER SPRAY HEADS**  
2x Batter spray heads mounted on each side of the truck between the tank and the cab



**FRONT SPRAY HEADS**  
2 x Front spray frog nozzles mounted on front of the truck - individual on/off



**WORK LIGHTS**  
Rear LED worklights with in cab switch

## OTHER FEATURES

- |  |   |
|--|---|
| ① 20M SPRING REWIND HOSE REEL            | ⑤ SUCTION / DISCHARGE MANIFOLD & FILL KIT |
| ② LED REAR TAILLIGHTS & CLEARANCE LIGHTS | ⑥ ROOF RACK WITH ROTATING BEACONS         |
| ③ FUNNEL LID AND HYDRANT FILL SYSTEM     | ⑦ GME TX4500 UHF                          |
| ④ REVERSE CAMERA & SQUAWKER              | ⑧ BATTERY ISOLATION SWITCH                |

ABN: 30 165 797 277 | FREECALL: 1800 816 277