



TANK SPECIFICATIONS

MAKE: TRANS TANK® INTERNATIONAL

MODEL: STORM™ 13000L

MATERIAL: POLYETHYLENE

MAX. CAPACITY: 13,000 LITRES

SAFETY & COMPLIANCE ENGINEERING PLATE AND CERTIFICATE FOR BODY MOUNTING; ADR COMPIANT DESIGN; OPERATOR MANUAL; RISK ASSESSMENT; ISO 9001:2015 ISO STANDARD QUALITY MANAGEMENT

CHASSIS SPECIFICATIONS

MAKE: ISUZU

MODEL: FVZ 240 - 300 - Spring Suspension

CONFIGURATION: 6 X 4

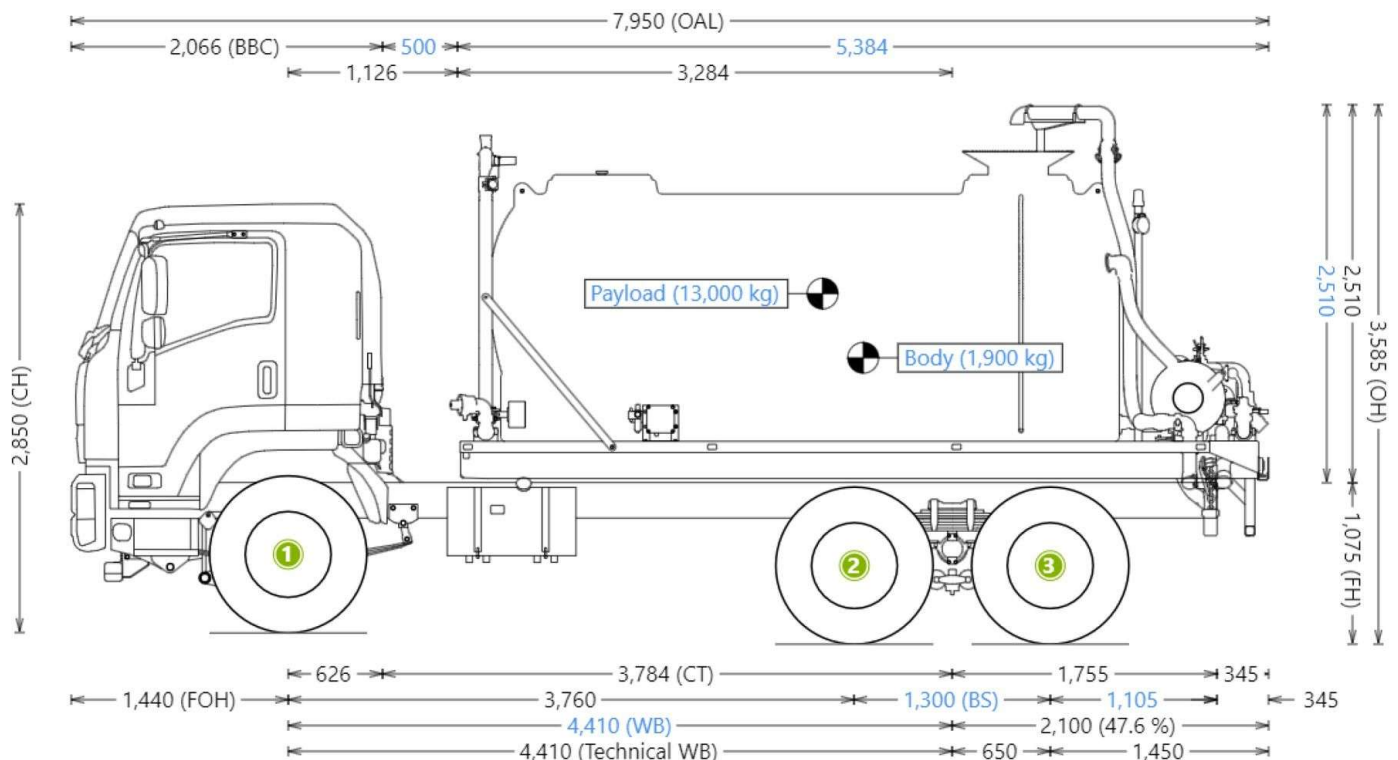
GVM | GCM: 26,000 kg | 36,500 kg

TRANSMISSION: ALLISON 3200
6 SPEED AUTOMATIC

ENGINE: Isuzu 6HK1-TCS
6 CYLINDER TURBOCHARGED AND INTERCOOLED DIESEL

POWER: 300hp / 221kW @ 2,400RPM

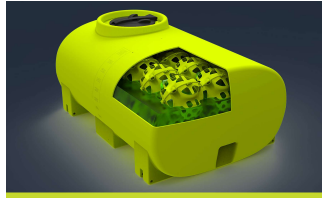
FUEL TANK: 200 LITRES



STANDARD FEATURES



HEAVY-DUTY POLY TANK
Tough, rotomolded poly tank with a 25-Year Warranty, reflective decals & rear/site tubes



LIQUIDLOCKER™ Baffle SYSTEM
100% Elimination of liquid surge for safe water transport



ENGINEER APPROVED CHASSIS FRAME
Galvanised, engineer-approved subframe, fitted to truck chassis. VASS Certificate supplied.



EASY-TO-USE IN-CAB CONTROLLER
Ergonomic In-cab control panel mounted in the cabin



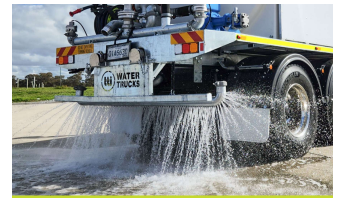
HYDRAULIC PUMP SYSTEM
Variable Speed Hydraulic system complete with Hydra Pak, PTO to Truck, Piston Pump, Hydraulic valving and controls



1600 L/MIN CAST IRON PUMP
1600L/min, Self Priming, Australian Made Cast Iron Pump with pressure relief



3" REAR SPRAY HEADS
Central 3" & two 1.5" left and right spray heads with individual on/off. Adjustable roll groove mounting



PRESSURISED AND/OR GRAVITY DRIBBLE BAR
Featuring 3" Pressurised and/or Gravity Dribble Bar's



3" WATER CANNON (ELEC)
Electric nozzle for spray pattern control; In-cab joystick; Australian Made



BATTER SPRAY HEADS
2x Batter spray heads mounted on each side of the truck between the tank and the cab



FRONT SPRAY HEADS
2 x Front spray frog nozzles mounted on front of the truck - individual on/off



WORK LIGHTS
Rear LED worklights with in cab switch

OTHER FEATURES

- ① 20M SPRING REWIND HOSE REEL
- ② LED REAR TAILLIGHTS & CLEARANCE LIGHTS
- ③ FUNNEL LID AND HYDRANT FILL SYSTEM
- ④ REVERSE CAMERA & SQUAWKER
- ⑤ SUCTION / DISCHARGE MANIFOLD & FILL KIT
- ⑥ ROOF RACK WITH ROTATING BEACONS
- ⑦ GME TX4500 UHF
- ⑧ BATTERY ISOLATION SWITCH

ABN: 30 165 797 277 | FREECALL: 1800 816 277