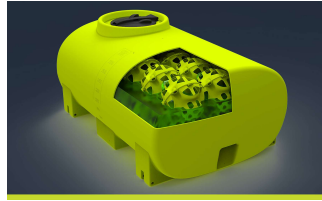




## STANDARD FEATURES



**HEAVY-DUTY POLY TANK**  
 Tough, rotomolded poly tank with a 20-Year Warranty, reflective decals & rear/side site tubes



**LIQUIDLOCKER™ Baffle SYSTEM**  
 100% Elimination of liquid surge for safe water transport



**ENGINEER APPROVED CHASSIS FRAME**  
 Galvanised, engineer-approved subframe, fitted to truck chassis. VASS Certificate supplied.



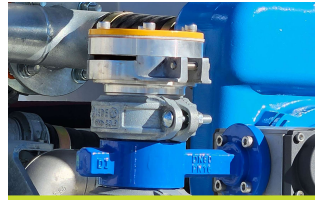
**EASY-TO-USE IN-CAB CONTROLLER**  
 Ergonomic In-cab control panel mounted in the cabin



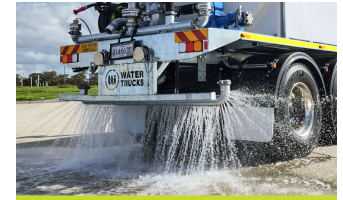
**HYDRAULIC PUMP SYSTEM**  
 Variable Speed Hydraulic system complete with Hydra Pak, PTO to Truck, Piston Pump, Hydraulic valving and controls



**1600 L/MIN CAST IRON PUMP**  
 1600L/min, Self Priming, Australian Made Cast Iron Pump with pressure relief



**3" REAR SPRAY HEADS**  
 Central 3" & two 1.5" left and right magnum spray heads with individual on/off. Adjustable roll groove mounting



**PRESSURISED AND/OR GRAVITY DRIBBLE BAR**  
 Featuring 3" Pressurised and/or Gravity Dribble Bar's



**3" WATER CANNON (ELECTRIC)**  
 Electric nozzle for spray pattern control; In-cab joystick; Australian Made



**BATTER SPRAY HEADS**  
 2x Batter spray heads mounted on each side of the truck between the tank and the cab



**FRONT SPRAY HEADS**  
 2 x Front spray frog nozzles mounted on front of the truck - individual on/off



**WORK LIGHTS**  
 Engineered-for-purpose water cart vehicles. Built to your specifications to suit any mining, civil, or commercial environment.

## OTHER FEATURES

- ① 20M SPRING REWIND HOSE REEL
- ② LED REAR TAILLIGHTS & CLEARANCE LIGHTS
- ③ FUNNEL LID AND HYDRANT FILL SYSTEM
- ④ REVERSE CAMERA & SQUAWKER
- ⑤ SUCTION / DISCHARGE MANIFOLD & FILL KIT
- ⑥ ROOF RACK WITH ROTATING BEACONS
- ⑦ GME TX4500 UHF
- ⑧ BATTERY ISOLATION SWITCH